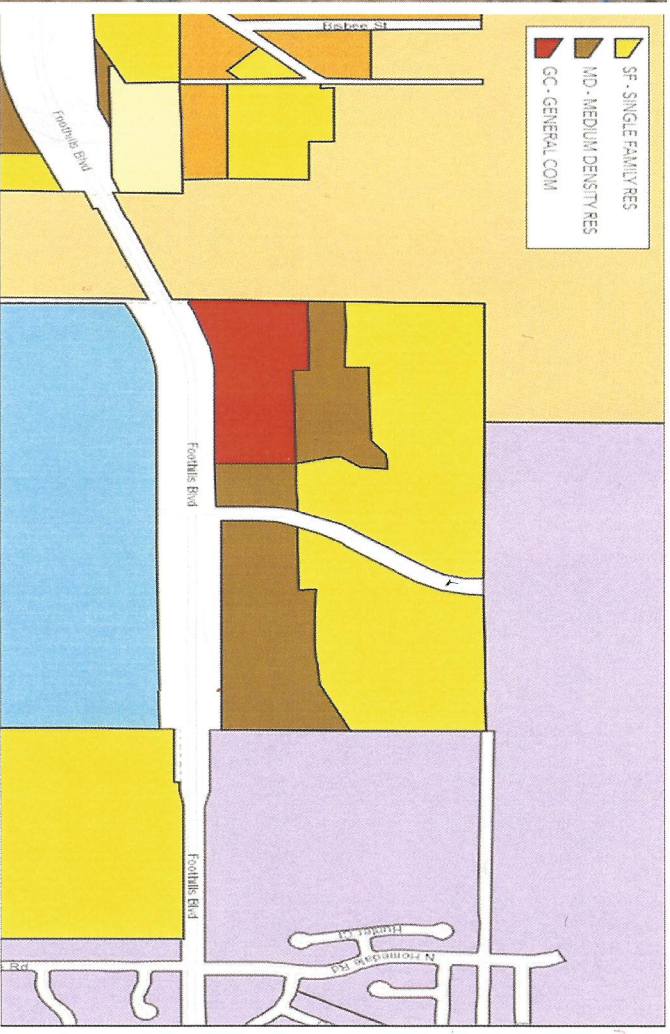
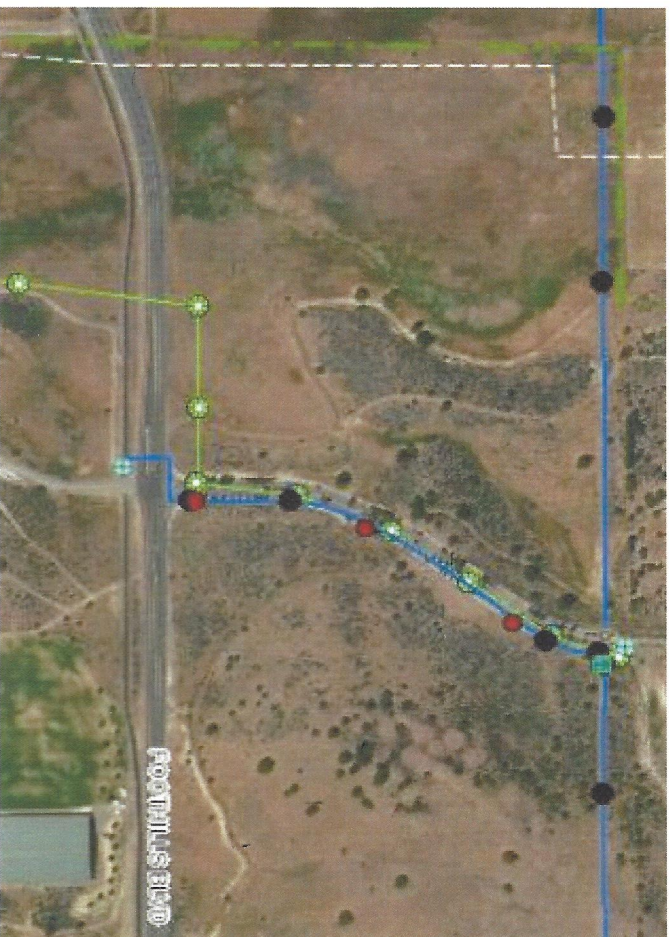


## Foothills Blvd Property



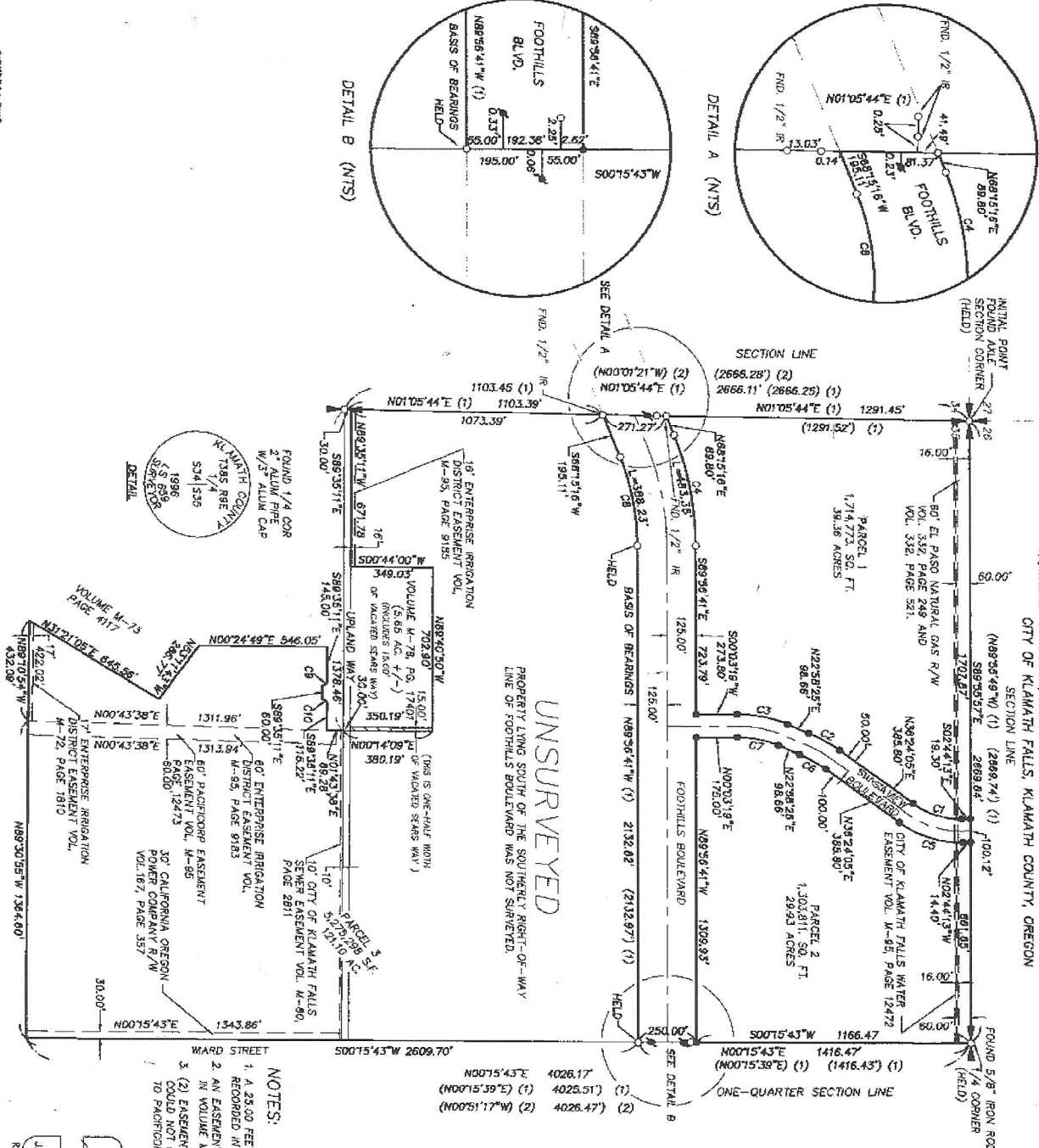
### Existing City Utilities (Water /Blue- Sewer/Green)

1. County owns 40 acres west of across from Steen's Sports Park
2. Existing Pedestrian / Bike Path along Foothills Blvd.
3. General Commercial = 8.6 acres
4. Medium Density = 7.1 acres
5. Single Family = 24.59 acres



# LAND PARTITION 60-97

LOCATED IN THE N.W. ONE-QUARTER AND THE NORTH ONE-HALF OF THE S.W. ONE-QUARTER OF SECTION 35 TOWNSHIP 38 SOUTH, RANGE 9 EAST OF THE WILLAMETTE MERIDIAN CITY OF KIAMATH FALLS, KIAMATH COUNTY, OREGON



SURVEYED: JANUARY, 1998

## LEGEND

- FOUND 5/8" IRON ROD W/ YELLOW PLASTIC CAP MARKED PUBLIC WORKS, UNLESS OTHERWISE NOTED.
- FOUND 5/8" IRON ROD W/ 1 1/2" ALUMINUM CAP, UNLESS OTHERWISE NOTED.
- SET 5/8" X 30" IRON ROD WITH YELLOW PLASTIC CAP MARKED W&P PACIFIC.
- VACATED PARCELS OF "ENTERPRISE TRACTS"
- ( ) (1) RECORD DATA PER SURVEY 5880
- ( ) (2) RECORD DATA PER SURVEY 1558
- ( ) (3) RECORD DATA PER PLAT OF "SHADOW HILLS"
- IR FOUND
- IR IRON ROD

## REFERENCE SURVEYS

SURVEY NO. 5880 SURVEY NO. 2518  
SURVEY NO. 1558 SURVEY NO. 3173  
PLAT OF "SHADOW HILLS"

CURVE	LENGTH	RADIUS	DELTA	CHORD	BEG LONG	CHORD
C1	239.08	350.00	39.0812	116.42-25.7	234.46	
C2	152.33	650.00	12.2540	528.41-15.7	218.98	
C3	220.00	550.00	22.5506	511.30-52.7	218.54	
C4	483.35	1270.31	17.4803	579.08-17.7	450.44	
C5	307.39	450.00	39.0812	518.42-56.7	301.45	
C6	128.80	550.00	1.9540	528.41-15.7	128.80	
C7	160.00	450.00	22.5506	511.30-52.7	172.80	
C8	388.23	1020.31	27.9802	579.08-17.7	355.89	
C9	31.42	20.00	90.0000	344.92-32.7	22.29	
C10	31.42	20.00	90.0000	145.27-120.7	22.29	

## NOTES:

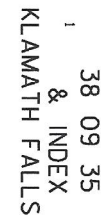
1. A 25.00 FEET WIDE EASEMENT GRANTED TO THE CALIFORNIA OREGON POWER COMPANY RECORDED IN VOLUME 283, PAGE 533, AFFECTING PARCEL 3 COULD NOT BE DEFINED.
2. AN EASEMENT GRANTED TO SOUTHERN OREGON BROADCASTING COMPANY RECORDED IN VOLUME W-23, PAGE 13493, AFFECTING PARCELS 1 & 2 COULD NOT BE DEFINED.
3. (2) EASEMENTS TO PACIFICORP RECORDED IN VOLUME 485, PAGES 16751 AND 17109 COULD NOT BE DEFINITELY DEFINED, BUT APPEAR TO BE WITHIN OR NEAR AN EASEMENT TO PACIFICORP AS SHOWN ON THIS PLAT AND RECORDED IN VOLUME 485, PAGE 12473.

REGISTERED PROFESSIONAL LAND SURVEYOR  
JACK BUTLER  
RENEWAL: 12-31-99

**W&P PACIFIC**  
1004 MAIN ST  
KIAMATH FALLS, OR 97601  
(541) 884-3042

SHEET 1 OF 2

SHEET 1 OF 2



## Demographic Report

20 mile radius around Lat: 42.225 Lng: -121.734

Population	2020	2025
	TOTAL	TOTAL
Population	56,735	59,861

Age Distribution	2020		2025	
	TOTAL	%	TOTAL	%
0-4	3,755	6.62	4,023	6.72
5-9	3,675	6.48	3,915	6.54
10-19	6,961	12.27	7,717	12.89
20-29	7,483	13.19	7,539	12.59
30-39	7,090	12.5	7,597	12.69
40-49	6,045	10.65	6,611	11.04
50-59	6,494	11.45	6,134	10.25
60-64	3,741	6.59	3,380	5.65
65+	11,491	20.25	12,945	21.63
Average Median Age	38.462	0.07	38.125	0.06

Sex	2020		2025	
	TOTAL	%	TOTAL	%
Male	28,097	49.52	29,458	49.21
Female	28,638	50.48	30,403	50.79



Ethnicity Distribution		2020		2025	
		TOTAL	%	TOTAL	%
White (non-hispanic)		43,681	76.99	45,158	75.44
Black (non-hispanic)		668	1.18	812	1.36
American Indian (non-hispanic)		1,451	2.56	1,611	2.69
Asian (non-hispanic)		743	1.31	772	1.29
Pacific Islander (non-hispanic)		56	0.1	61	0.1
Other (non-hispanic)		11	0.02	12	0.02
Multirace (non-hispanic)		2,308	4.07	2,570	4.29
Hispanic		7,835	13.81	8,878	14.83

Race Distribution		2020		2025	
		TOTAL	%	TOTAL	%
White		47,163	83.13	49,125	82.07
Black		746	1.31	919	1.54
American Indian		1,735	3.06	1,945	3.25
Asian		754	1.33	792	1.32
Pacific Islander		62	0.11	67	0.11
Other		3,118	5.5	3,469	5.8
Multirace		3,157	5.56	3,544	5.92

Total Households		2020		2025	
		TOTAL	%	TOTAL	%
Households		24,022	61.12	23,630	59.78
Families		15,280	63.61	15,901	67.29

Average Household Income		2020		2025	
		TOTAL		TOTAL	
Average Household Income		65,371.548		79,288.44	

Household Income Distribution	2020		2025	
	TOTAL	%	TOTAL	%
<\$10 K	1,738	7.24	1,471	6.23
\$10-\$20K	2,891	12.03	2,134	9.03
\$20-\$30K	2,814	11.71	2,692	11.39
\$30-\$40K	2,319	9.65	1,987	8.41
\$40-\$50K	2,569	10.69	2,166	9.17
\$50-\$60K	2,124	8.84	2,058	8.71
\$60-\$75K	2,437	10.14	2,506	10.61
\$75-\$100K	3,001	12.49	2,926	12.38
> \$100K	4,129	17.19	5,690	24.08

Labor Force Status	2020		2025	
	TOTAL	%	TOTAL	%
Labor Force	25,156	n/a	26,408	n/a
Employed	23,125	91.93	24,272	91.91
Unemployed	1,742	6.92	1,834	6.94
In Armed Forces	289	n/a	302	n/a
Not In Labor Force	20,044	n/a	21,059	n/a

Total Number of Housing	2020		2025	
	TOTAL	%	TOTAL	%
Total Dwellings	26,676	n/a	27,418	n/a
Owner-Occupied Dwellings	15,388	64.06	15,072	63.78
Renter-Occupied Dwellings	8,634	35.94	8,558	36.22
Housing Units Occupied	24,022	n/a	23,630	n/a

Education Attainment	2020		2025	
	TOTAL	%	TOTAL	%
< Grade 9	1,361	3.5	1,409	3.49
Grade 9-12	3,278	8.44	3,411	8.45
High School	10,999	28.33	11,450	28.35
Some College	10,841	27.92	11,311	28.01
Assoc Degree	4,124	10.62	4,284	10.61
Bach Degree	5,232	13.47	5,409	13.39
Grad Degree	2,996	7.72	3,108	7.7



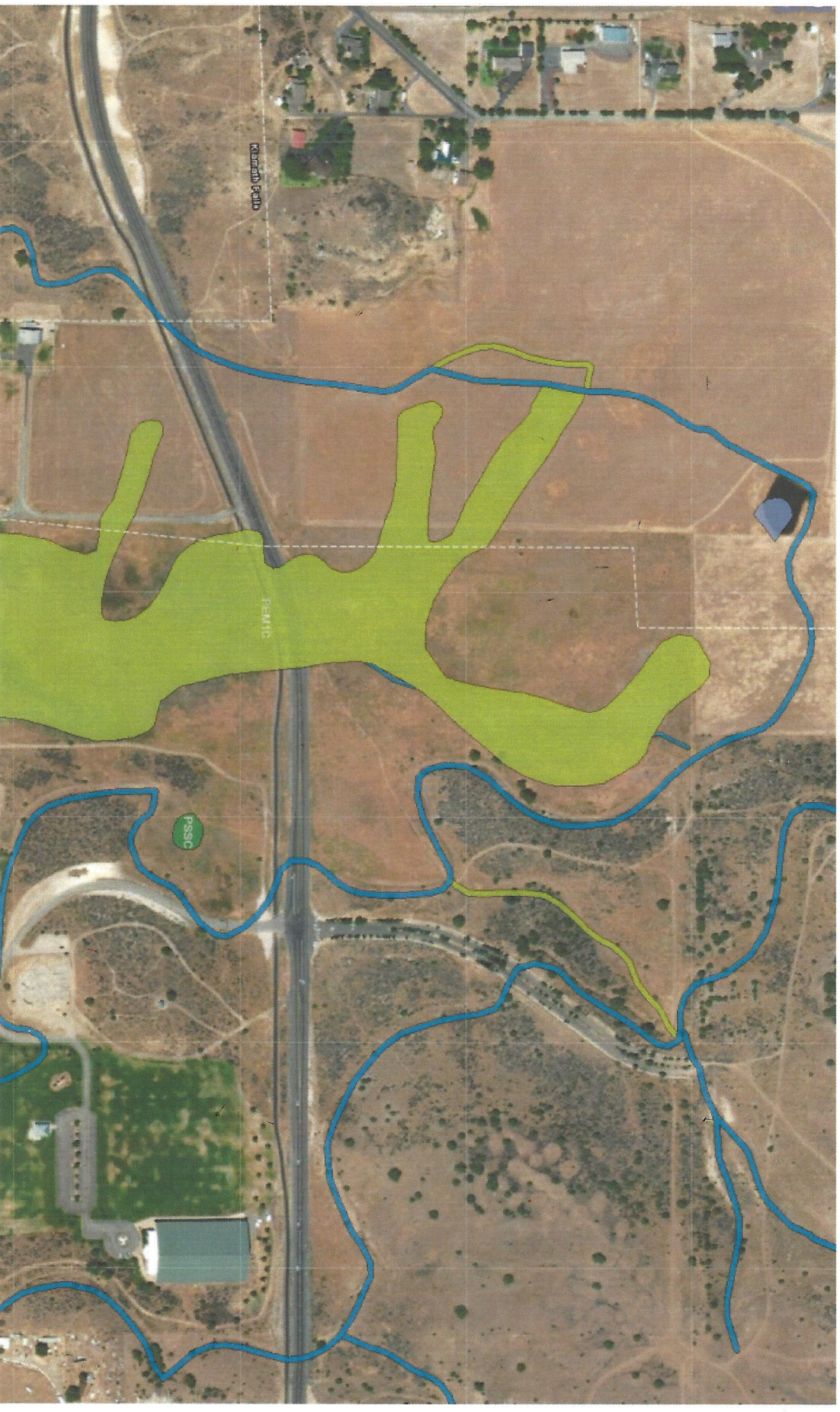
Size of Household	2020		2025	
	TOTAL	%	TOTAL	%
1 Person	7,042	29.31	6,076	25.71
2 Person	9,261	38.55	9,030	38.21
3 Person	3,303	13.75	3,701	15.66
4 Person	2,514	10.47	2,780	11.76
5 Person	1,143	4.76	1,247	5.28
6+ Person	482	2.01	509	2.15

Data Source: Applied Geographic Solutions 2020



# National Wetland Inventory

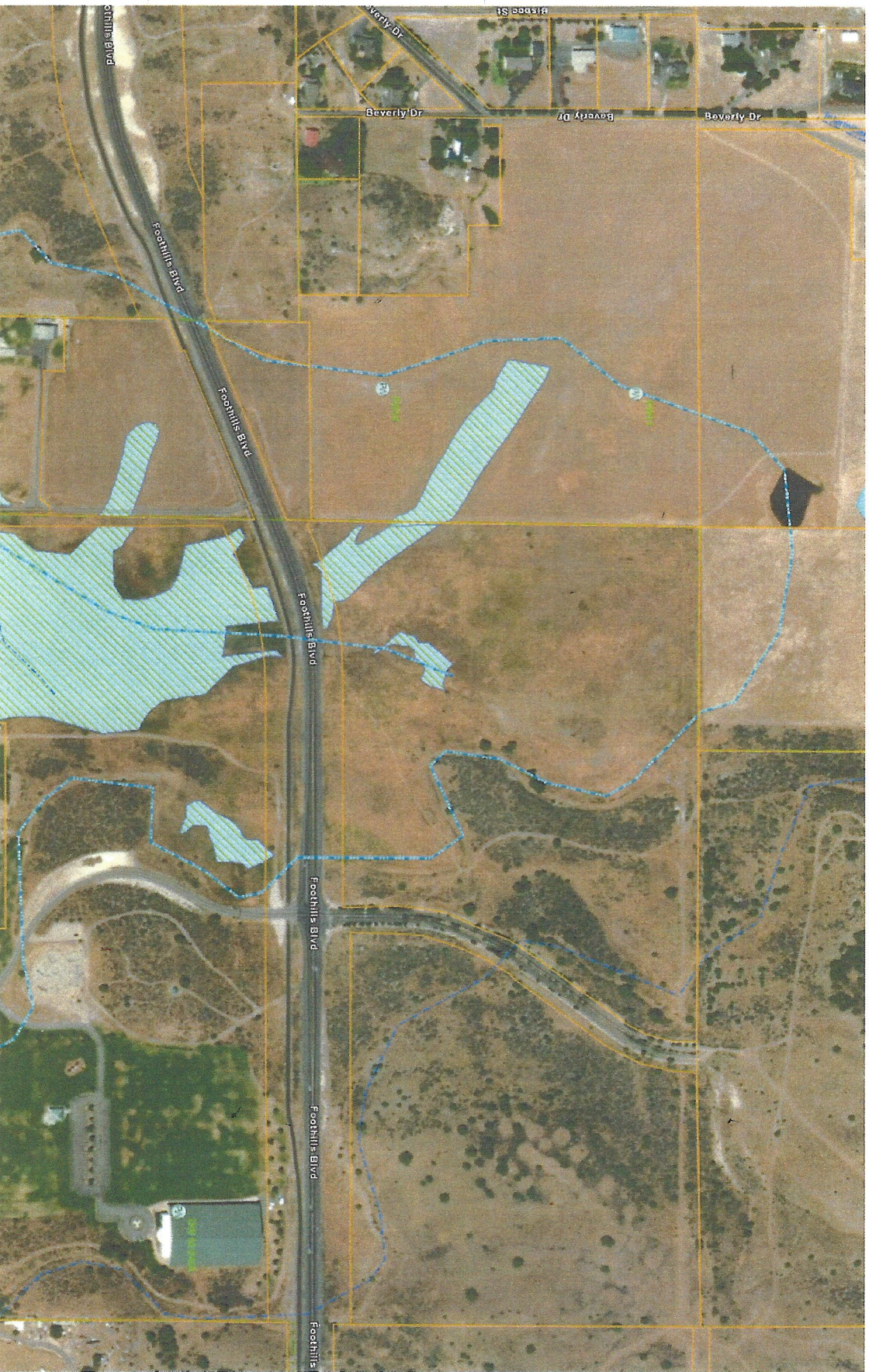
Approximately from 1979



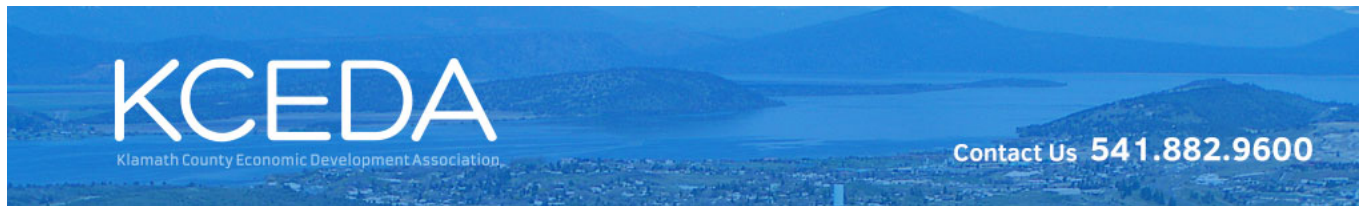


# Local Wetland Inventory

Updated in 2004







Business Report

10 mile radius around Lat: 42.225 Lng: -121.734

	TOTAL	%	SALES	EMPLOYEES
Accommodation and Food Services	151	5.88%	\$104,536,000	2,097
Administrative and Support and Waste Management and Remediation Services	64	2.49%	\$28,021,000	294
Agriculture, Forestry, Fishing and Hunting	28	1.09%	\$7,755,000	111
Arts, Sports, Entertainment, and Recreation	43	1.67%	\$16,605,000	497
Banking, Finance and Insurance	160	6.23%	\$1,004,216,000	657
Construction	130	5.06%	\$158,892,000	803
Education	50	1.95%	\$1,617,000	1,364
Health Care and Social Services	664	25.84%	\$265,197,000	4,420
Holding Companies and Managing Offices	4	0.16%	\$5,264,000	12
Information	39	1.52%	\$105,148,000	513
Manufacturing - Chemical, Fuel, Paper, Plastic, Wood	19	0.74%	\$247,188,000	993
Manufacturing - Electronics, Furniture, Machinery, Metal, Transportation, Misc.	27	1.05%	\$45,730,000	320
Manufacturing - Processed Food, Textiles, Clothing	14	0.54%	\$50,322,000	425
Mineral, Oil and Gas Extraction	3	0.12%	\$6,195,000	17
Other Services - Repair, Personal Care, Laundry, Religious, etc.	294	11.44%	\$48,133,000	1,281
Professional, Scientific, and Technical Services	160	6.23%	\$91,324,000	843
Public Administration	105	4.09%	\$0	1,852
Real Estate and Rentals	111	4.32%	\$48,953,000	371



	TOTAL	%	SALES	EMPLOYEES
Retail: Hobby, Media, General Merchandise	100	3.89%	\$182,865,000	1,117
Retail: Home, Food, Automobiles, Personal Care	199	7.74%	\$717,440,000	2,371
Transportation and Warehousing: Couriers and Messengers, Warehousing and Storage	6	0.23%	\$423,000	80
Transportation and Warehousing: Private and Public Transportation,Oil and Gas Pipelines,Sightseeing	31	1.21%	\$25,684,000	292
Unclassified	97	3.77%	\$0	80
Utility Services: Power, Gas, Steam, Water, and Sewage	5	0.19%	\$37,135,000	117
Wholesalers	66	2.57%	\$892,804,000	569

## Consumer Expenditures Report

20 mile radius around Lat: 42.225 Lng: -121.734

Apparel		2020		2025	
	\$ PER HOUSEHOLD	TOTAL \$000'S		\$ PER HOUSEHOLD	TOTAL \$000'S
Total	\$1,793	n/a		\$2,060	n/a
Men's Apparel	\$329	\$7,919		\$379	\$8,961
Boys' Apparel	\$93	\$2,251		\$107	\$2,540
Women's Apparel	\$575	\$13,828		\$658	\$15,572
Girls' Apparel	\$105	\$2,527		\$120	\$2,855
Infants Apparel	\$75	\$1,819		\$86	\$2,037
Footwear	\$362	\$8,720		\$415	\$9,815
Apparel Services and Accessories	\$250	\$6,015		\$292	\$6,903

Entertainment		2020		2025	
	\$ PER HOUSEHOLD	TOTAL \$000'S		\$ PER HOUSEHOLD	TOTAL \$000'S
Total	\$2,878	n/a		\$3,313	n/a
Fees And Admissions	\$654	\$15,712		\$779	\$18,431
Video And Audio Equipment	\$1,070	\$25,725		\$1,199	\$28,341
Recreational Equipment And Supplies	\$1,153	\$27,715		\$1,334	\$31,525

Education		2020		2025	
	\$ PER HOUSEHOLD	TOTAL \$000'S		\$ PER HOUSEHOLD	TOTAL \$000'S
Total	\$1,408	n/a		\$1,672	n/a
Books And Supplies	\$182	\$4,382		\$216	\$5,118
Tuition	\$1,225	\$29,445		\$1,455	\$34,404



Food and Beverages		2020		2025
	\$ PER HOUSEHOLD	TOTAL \$000'S	\$ PER HOUSEHOLD	TOTAL \$000'S
Total	\$7,726	n/a	\$8,763	n/a
Food At Home	\$4,134	\$99,328	\$4,639	\$109,632
Food Away From Home	\$3,090	\$74,242	\$3,544	\$83,750
Alcoholic Beverages	\$501	\$12,040	\$580	\$13,709

Gifts		2020		2025
	\$ PER HOUSEHOLD	TOTAL \$000'S	\$ PER HOUSEHOLD	TOTAL \$000'S
Total	\$1,208	n/a	\$1,408	n/a
Gifts Of Apparel	\$199	\$4,803	\$233	\$5,507
Gifts Of Apparel Accessories	\$23	\$568	\$27	\$652
Gifts Of Education	\$298	\$7,180	\$348	\$8,224
Gifts Of Recreation	\$98	\$2,364	\$114	\$2,705
Gifts Of Food And Beverages	\$99	\$2,393	\$116	\$2,743
Gifts Of Household Furnishings And Equipment	\$188	\$4,538	\$220	\$5,210
Gifts Of Household	\$50	\$1,218	\$58	\$1,394
Gifts Of Transportation	\$112	\$2,697	\$131	\$3,113
Gifts Elsewhere Unspecified	\$136	\$3,272	\$158	\$3,736

Household Furnishings		2020		2025
	\$ PER HOUSEHOLD	TOTAL \$000'S	\$ PER HOUSEHOLD	TOTAL \$000'S
Total	\$1,791	n/a	\$2,061	n/a
Household Textiles	\$107	\$2,587	\$122	\$2,895
Furniture	\$455	\$10,933	\$527	\$12,465
Floor Coverings	\$21	\$513	\$25	\$595
Major Appliances	\$261	\$6,283	\$299	\$7,076
Housewares And Small Appliances	\$946	\$22,728	\$1,086	\$25,675

Shelter		2020		2025
	\$ PER HOUSEHOLD	TOTAL \$000'S	\$ PER HOUSEHOLD	TOTAL \$000'S
Total	\$11,005	n/a	\$12,495	n/a
Mortgage Interest	\$3,043	\$73,109	\$3,584	\$84,702
Property Taxes	\$1,923	\$46,214	\$2,232	\$52,752
Miscellaneous Owned Dwelling Costs	\$1,421	\$34,159	\$1,628	\$38,490
Rental Costs	\$3,882	\$93,254	\$4,172	\$98,592
Other Lodging	\$733	\$17,628	\$877	\$20,732

Household Operations		2020		2025
	\$ PER HOUSEHOLD	TOTAL \$000'S	\$ PER HOUSEHOLD	TOTAL \$000'S
Total	\$2,014	n/a	\$2,310	n/a
Babysitting And Elderly Care	\$142	\$3,424	\$171	\$4,061
Household Services	\$895	\$21,523	\$1,027	\$24,291
Alimony And Child Support	\$287	\$6,899	\$332	\$7,859
Household Supplies	\$688	\$16,550	\$777	\$18,382

Personal Care		2020		2025
	\$ PER HOUSEHOLD	TOTAL \$000'S	\$ PER HOUSEHOLD	TOTAL \$000'S
Total	\$695	n/a	\$794	n/a
Hair Care	\$92	\$2,225	\$105	\$2,498
Electric Personal Care Appliances	\$9	\$235	\$11	\$263
Personal Care Services	\$318	\$7,639	\$362	\$8,575
Personal Care Products	\$275	\$6,618	\$314	\$7,428

Utilities		2020		2025
	\$ PER HOUSEHOLD	TOTAL \$000'S	\$ PER HOUSEHOLD	TOTAL \$000'S
Total	\$4,000	n/a	\$4,466	n/a
Natural Gas	\$412	\$9,914	\$463	\$10,950
Electricity	\$1,509	\$36,251	\$1,672	\$39,512
Fuel Oil And Other Fuels	\$124	\$2,980	\$139	\$3,304
Telephone Service	\$1,390	\$33,412	\$1,558	\$36,839
Other Utilities	\$563	\$13,543	\$632	\$14,943

Reading		2020		2025	
	\$ PER HOUSEHOLD	TOTAL \$000'S		\$ PER HOUSEHOLD	TOTAL \$000'S
Total	\$113	n/a		\$129	n/a
Newspapers	\$41	\$1,003		\$47	\$1,126
Magazines	\$13	\$334		\$15	\$375
Books	\$57	\$1,388		\$65	\$1,559
Tobacco		2020		2025	
	\$ PER HOUSEHOLD	TOTAL \$000'S		\$ PER HOUSEHOLD	TOTAL \$000'S
Total	\$347	n/a		\$376	n/a
Cigarettes	\$304	\$7,308		\$329	\$7,789
Other Tobacco Products	\$43	\$1,043		\$47	\$1,112
Transportation		2020		2025	
	\$ PER HOUSEHOLD	TOTAL \$000'S		\$ PER HOUSEHOLD	TOTAL \$000'S
Total	\$9,476	n/a		\$10,804	n/a
New Vehicle Purchase	\$1,749	\$42,028		\$2,039	\$48,201
Used Vehicle Purchase	\$1,898	\$45,612		\$2,144	\$50,680
Motorcycles (New And Used)	\$53	\$1,283		\$61	\$1,450
Vehicle Finance Charges	\$221	\$5,321		\$253	\$5,985
Gasoline And Oil	\$2,312	\$55,551		\$2,596	\$61,357
Vehicle Repair And Maintenance	\$887	\$21,323		\$1,010	\$23,870
Vehicle Insurance	\$1,106	\$26,569		\$1,240	\$29,323
Public Transportation	\$623	\$14,982		\$734	\$17,364
Other Transportation Costs	\$623	\$14,982		\$722	\$17,084
Health Care		2020		2025	
	\$ PER HOUSEHOLD	TOTAL \$000'S		\$ PER HOUSEHOLD	TOTAL \$000'S
Total	\$4,535	n/a		\$5,110	n/a
Health Care Insurance	\$3,045	\$73,168		\$3,426	\$80,978
Health Care Services	\$845	\$20,314		\$963	\$22,774
Health Care Supplies And Equipment	\$643	\$15,463		\$720	\$17,019



Miscellaneous Expenses		2020		2025	
	\$ PER HOUSEHOLD	TOTAL \$000'S		\$ PER HOUSEHOLD	TOTAL \$000'S
Total	\$977	n/a		\$1,116	n/a
Legal And Accounting	\$227	\$5,457		\$259	\$6,127
Funeral And Cemetery	\$76	\$1,846		\$87	\$2,073
Finance Charges Excluding Mortgage And Vehicle	\$399	\$9,587		\$455	\$10,764
Other Miscellaneous Expenses	\$274	\$6,603		\$313	\$7,414

Personal Insurance		2020		2025	
	\$ PER HOUSEHOLD	TOTAL \$000'S		\$ PER HOUSEHOLD	TOTAL \$000'S
Total	\$348	n/a		\$407	n/a

Contributions		2020		2025	
	\$ PER HOUSEHOLD	TOTAL \$000'S		\$ PER HOUSEHOLD	TOTAL \$000'S
Total	\$1,635	n/a		\$1,896	n/a

Retail Potential		
	\$ PER HOUSEHOLD	TOTAL \$000'S
Other Health and Personal Care Stores	\$51	\$1,232
Gasoline Stations with Convenience Stores	\$0	n/a
Gasoline Stations without Convenience Stores	\$2,691	\$64,657
Men's Clothing Stores	\$38	\$922
Women's Clothing Stores	\$167	\$4,027
Childrens' and Infant's Clothing Stores	\$71	\$1,728
Family Clothing Stores	\$446	\$10,726
Clothing Accessory Stores	\$35	\$857
Other Apparel Stores	\$54	\$1,310
Shoe Stores	\$183	\$4,417
Jewelry Stores	\$84	\$2,026
Luggage Stores	\$6	\$166
Sporting Goods Stores	\$218	\$5,249
Hobby, Toy, and Game Stores	\$65	\$1,571
Sewing and Needlecraft Stores	\$20	\$483
Musical Instrument Stores	\$18	\$456
Book Stores	\$80	\$1,923
Record,Tape,and CD Stores	\$0	n/a
Department Stores	\$903	\$21,714
Warehouse Superstores	\$2,291	\$55,056
Other General Merchandise Stores	\$345	\$8,304
Florists	\$16	\$401
Office and Stationary Stores	\$47	\$1,129
Gift and Souvenir Stores	\$57	\$1,372
Used Merchandise Stores	\$32	\$792
Pet and Pet Supply Stores	\$194	\$4,666
Art Dealers	\$15	\$374
Mobile Home Dealers	\$28	\$689
Other Miscellaneous Retail Stores	\$88	\$2,117
Mail Order and Catalog Stores	\$1,336	\$32,099
Vending Machines	\$37	\$906
Fuel Dealers	\$135	\$3,264
Other Direct Selling Establishments	\$103	\$2,484

	\$ PER HOUSEHOLD	TOTAL \$000'S
Hotels and Other Travel Accommodations	\$169	\$4,067
RV Parks	\$1	\$40
Rooming and Boarding Houses	\$1	\$28
Full Service Restaurants	\$1,585	\$38,081
Limited Service Restaurants	\$1,053	\$25,315
Special Food Services and Catering	\$267	\$6,427
Drinking Places	\$76	\$1,830

Data Source: Applied Geographic Solutions 2020

## Labor Force Report

20 mile radius around Lat: 42.225 Lng: -121.734

### Total Establishments

**TOTAL**

**Total Establishments**

**2,537**

### Total Establishments by Size

**TOTAL**

**%**

**1-4 Employees**

**1,591**

**62.71**

**5-9 Employees**

**499**

**19.67**

**10-19 Employees**

**205**

**8.08**

**20-49 Employees**

**165**

**6.5**

**50-99 Employees**

**51**

**2.01**

**100-249 Employees**

**21**

**0.83**

**250-499 Employees**

**3**

**0.12**

**500-999 Employees**

**1**

**0.04**

**1000+ Employees**

**1**

**0.04**



Total Businesses by Establishment Type		
	TOTAL	%
Agriculture, Forestry and Fishing	32	1.26
Agricultural Services	58	2.29
Coal and Ore Mining	0	n/a
Oil and Gas	3	0.12
General Construction	53	2.09
Heavy Construction	91	3.59
Food Manufacturing	11	0.43
Tobacco Manufacturing	1	0.04
Textile Mills	0	n/a
Apparel and Textile Manufacturing	0	n/a
Lumber and Wood Production	14	0.55
Furniture Manufacturing	1	0.04
Paper Manufacturing	1	0.04
Printing and Publishing	10	0.39
Chemicals	0	n/a
Petroleum Refining	3	0.12
Rubber and Plastics	2	0.08
Leather Manufacturing	1	0.04
Stone, Glass, and Concrete	1	0.04
Metals Fabrication	7	0.28
Machinery and Equipment Manufacturing	16	0.63
Transportation	57	2.25
Travel Services	3	0.12
Transport Services	3	0.12
Communications	23	0.91
Utilities	11	0.43
Durables Wholesale	56	2.21
Non Durables Wholesale	28	1.1
Building Materials, Hardware and Garden	27	1.06
General Merchandise Stores	18	0.71
Food Markets	19	0.75
Convenience Stores	10	0.39
Other Food Stores	20	0.79

	TOTAL	%
Auto Dealers and Gas Stations	65	2.56
Clothing Stores	14	0.55
Furniture Stores	12	0.47
Home Furnishings	9	0.35
Electronics and Computer Stores	1	0.04
Music Stores	4	0.16
Restaurants	93	3.67
Other Food Service	28	1.1
Bars	11	0.43
Drug Stores	4	0.16
Liquor Stores	4	0.16
Specialty Stores	94	3.71
Catalog and Direct Sales	10	0.39
Banks and Financial Institutions	119	4.69
Insurance Carriers	2	0.08
Insurance Agents and Brokers	36	1.42
Real Estate	82	3.23
Hotels and Lodging	41	1.62
Dry Cleaning and Laundry	10	0.39
Beauty and Barber Shops	50	1.97
Other Personal Service	39	1.54
Advertising	12	0.47
Computer Services	20	0.79
Other Business Services	64	2.52
Auto Repair/Services	89	3.51
Miscellaneous Repair Services	21	0.83
Motion Pictures	12	0.47
Entertainment and Recreation Services	44	1.73
Health and Medical Services	309	12.18
Hospitals	44	1.73
Legal Services	37	1.46
Primary and Secondary Education	37	1.46
Colleges and Universities	5	0.2
Social Services	148	5.83

	TOTAL	%
Child Care Services	14	0.55
Museums and Zoos	7	0.28
Membership Organizations	96	3.78
Professional Services	54	2.13
Government	95	3.74
Unclassified Establishments	113	4.45



Total Businesses by NAICS		
	TOTAL	%
Agriculture, Forestry and Fishing	47	1.85
Agricultural Services	0	n/a
Coal and Ore Mining	1	0.04
Oil and Gas	2	0.08
General Construction	148	5.83
Heavy Construction	12	0.47
Food Manufacturing	11	0.43
Beverage and Tobacco Products	6	0.24
Textile Mills	0	n/a
Textile Products	0	n/a
Apparel Manufacturing	0	n/a
Leather Manufacturing	1	0.04
Wood Products	10	0.39
Paper Manufacturing	1	0.04
Printing and Publishing	5	0.2
Chemicals	0	n/a
Petroleum and Coal Products	3	0.12
Rubber and Plastics	2	0.08
Stone, Glass, and Concrete	1	0.04
Primary Metal Manufacturing	1	0.04
Metals Fabrication	10	0.39
Machinery and Equipment Manufacturing	5	0.2
Computers and Electronics	1	0.04
Electrical Equipment and Appliances	0	n/a
Transportation Equipment	0	n/a
Furniture Manufacturing	4	0.16
Miscellaneous Manufacturing	7	0.28
Communications	13	0.51
Utilities	6	0.24
Durables Wholesale	48	1.89
Non Durables Wholesale	26	1.02
Electronic Markets and Brokers	4	0.16
Motor Vehicle and Parts Dealers	43	1.69

	TOTAL	%
Furniture and Home Furnishings	15	0.59
Electronics and Appliances	14	0.55
Building Materials, Hardware and Garden	26	1.02
Food and Beverage Stores	43	1.69
Health and Personal Care Stores	22	0.87
Gasoline Stations	22	0.87
Clothing and Clothing Accessories	20	0.79
Sporting Goods/Hobby/Book/Music Stores	38	1.5
General Merchandise Stores	18	0.71
Miscellaneous Store Retailers	42	1.66
Nonstore Retailers	10	0.39
Warehousing/Storage, Postal/Courier Service	8	0.32
Publishing	5	0.2
Software Publishers	0	n/a
Motion Pictures and Video	2	0.08
Movie Theaters	1	0.04
Broadcasting	10	0.39
Data Processing/Hosting	5	0.2
Other Information Services	5	0.2
Banking	116	4.57
Insurance Carriers	38	1.5
Real Estate	93	3.67
Rental and Leasing	24	0.95
Legal Services	41	1.62
Accounting	22	0.87
Agricultural and Engineering	15	0.59
Specialized Design	6	0.24
Computer Systems Design	7	0.28
Management/Scientific/Technical Consulting	13	0.51
Scientific Research and Development	5	0.2
Advertising and Public Relations	14	0.55
Other Professional/Scientific/Technical Services	31	1.22
Company and Enterprise Management	4	0.16
Administrative and Support	52	2.05

	TOTAL	%
Waste Management and Remediation	9	0.35
Elementary and Secondary Schools	36	1.42
Colleges and Universities	5	0.2
Business Schools, Computer and Management Training	0	n/a
Technical and Trade Schools	2	0.08
Educational Services	14	0.55
Physician Offices	98	3.86
Dental Offices	43	1.69
Other Health Practicioners	151	5.95
Outpatient Care	25	0.99
Medical and Diagnostic Laboratories	2	0.08
Home Health Care Services	7	0.28
Ambulatory Services	17	0.67
General Medical and Surgical Hospitals	4	0.16
Psychiatric and Substance Abuse Hospitals	4	0.16
Other Hospitals	1	0.04
Nursing and Residential Care	17	0.67
Individual and Family Services	110	4.34
Community Relief Services	1	0.04
Vocational Rehabilitation	4	0.16
Child Care Services	14	0.55
Performing Arts	2	0.08
Spectator Sports	2	0.08
Performing Arts/Sports Promoters	2	0.08
Agents and Managers	0	n/a
Independent Artists/Writers/Performers	0	n/a
Museums, Zoos, Historical Sites	10	0.39
Amusement, Gambling, and Recreation	12	0.47
Fitness Centers	14	0.55
Accomodations	41	1.62
Food Services and Drinking Places	132	5.2
Repair and Maintenance Services	91	3.59
Personal Care Services	92	3.63
Death Care Services	11	0.43



	TOTAL	%
Religious/Civic/Professional Organizations	114	4.49
Public Administration	95	3.74

## Total Employees by Occupation

	TOTAL	%
Executive, Managers, and Administrators	1,752	7.89
Protective Services	290	1.31
Farming, Forestry, and Fishing	108	0.49
Business and Financial Operations	659	2.97
Computer and mathematical occupations	518	2.33
Architecture and engineering	347	1.56
Life/Physical/Social Science occupations	72	0.32
Community and Social Services	317	1.43
Legal	62	0.28
Education/Training/Library	1,315	5.92
Health Diagnosing and Treating Practitioners	1,140	5.14
Health Technologists/Technicians	434	1.96
Healthcare support	774	3.49
Food Preparation/Serving	1,557	7.01
Building and Grounds maintenance	799	3.6
Personal care and service	678	3.05
Sales	2,691	12.12
Office and Administrative support	2,819	12.7
Construction and Extraction	960	4.32
Installation/Maintenance and Repair workers	879	3.96
Production Workers	1,865	8.4
Transportation Workers	730	3.29
Material Moving	1,048	4.72

## Total Employees

	TOTAL
Total Employees	22,198

Total Employees by Major SIC		
	TOTAL	%
Agricultural, Forestry, Fishing (SIC Range 01-09)	444	2
Mining (SIC 10-14)	17	0.08
Construction (SIC 15-17)	871	3.92
Manufacturing (SIC 20-39)	1,967	8.86
Transportation and Communications (SIC 40-49)	877	3.95
Wholesale Trade (SIC 50-51)	681	3.07
Retail Trade (SIC 52-59)	5,167	23.28
Finance, Insurance And Real Estate (SIC 60-69)	1,355	6.1
Services (SIC 70-89)	9,551	43.03
Public Administration (SIC 90-98)	1,113	5.01
Unclassified (SIC 99)	155	0.7

Total Employees by Establishment Type		
	TOTAL	%
Agriculture, Forestry and Fishing	103	0.46
Agricultural Services	341	1.54
Coal and Ore Mining	0	n/a
Oil and Gas	17	0.08
General Construction	429	1.93
Heavy Construction	442	1.99
Food Manufacturing	291	1.31
Tobacco Manufacturing	2	0.01
Textile Mills	0	n/a
Apparel and Textile Manufacturing	0	n/a
Lumber and Wood Production	1,043	4.7
Furniture Manufacturing	6	0.03
Paper Manufacturing	1	0
Printing and Publishing	232	1.05
Chemicals	0	n/a
Petroleum Refining	39	0.18
Rubber and Plastics	34	0.15
Leather Manufacturing	1	0
Stone, Glass, and Concrete	70	0.32
Metals Fabrication	180	0.81
Machinery and Equipment Manufacturing	68	0.31
Transportation	409	1.84
Travel Services	28	0.13
Transport Services	5	0.02
Communications	261	1.18
Utilities	174	0.78
Durables Wholesale	385	1.73
Non Durables Wholesale	296	1.33
Building Materials, Hardware and Garden	801	3.61
General Merchandise Stores	912	4.11
Food Markets	247	1.11
Convenience Stores	49	0.22
Other Food Stores	235	1.06



	TOTAL	%
Auto Dealers and Gas Stations	615	2.77
Clothing Stores	48	0.22
Furniture Stores	48	0.22
Home Furnishings	19	0.09
Electronics and Computer Stores	3	0.01
Music Stores	6	0.03
Restaurants	1,230	5.54
Other Food Service	266	1.2
Bars	111	0.5
Drug Stores	56	0.25
Liquor Stores	14	0.06
Specialty Stores	463	2.09
Catalog and Direct Sales	44	0.2
Banks and Financial Institutions	413	1.86
Insurance Carriers	520	2.34
Insurance Agents and Brokers	117	0.53
Real Estate	305	1.37
Hotels and Lodging	843	3.8
Dry Cleaning and Laundry	57	0.26
Beauty and Barber Shops	259	1.17
Other Personal Service	135	0.61
Advertising	94	0.42
Computer Services	199	0.9
Other Business Services	330	1.49
Auto Repair/Services	372	1.68
Miscellaneous Repair Services	56	0.25
Motion Pictures	37	0.17
Entertainment and Recreation Services	471	2.12
Health and Medical Services	1,455	6.55
Hospitals	1,779	8.01
Legal Services	128	0.58
Primary and Secondary Education	1,288	5.8
Colleges and Universities	175	0.79
Social Services	698	3.14

	TOTAL	%
Child Care Services	313	1.41
Museums and Zoos	19	0.09
Membership Organizations	397	1.79
Professional Services	404	1.82
Government	1,113	5.01
Unclassified Establishments	155	0.7

Total Employees by NAICS		
	TOTAL	%
Agriculture, Forestry and Fishing	158	0.71
Agricultural Services	0	n/a
Coal and Ore Mining	5	0.02
Oil and Gas	12	0.05
General Construction	883	3.98
Heavy Construction	59	0.27
Food Manufacturing	344	1.55
Beverage and Tobacco Products	93	0.42
Textile Mills	0	n/a
Textile Products	0	n/a
Apparel Manufacturing	0	n/a
Leather Manufacturing	1	0
Wood Products	1,013	4.56
Paper Manufacturing	1	0
Printing and Publishing	14	0.06
Chemicals	0	n/a
Petroleum and Coal Products	39	0.18
Rubber and Plastics	34	0.15
Stone, Glass, and Concrete	70	0.32
Primary Metal Manufacturing	6	0.03
Metals Fabrication	194	0.87
Machinery and Equipment Manufacturing	24	0.11
Computers and Electronics	3	0.01
Electrical Equipment and Appliances	0	n/a
Transportation Equipment	0	n/a
Furniture Manufacturing	29	0.13
Miscellaneous Manufacturing	22	0.1
Communications	66	0.3
Utilities	128	0.58
Durables Wholesale	340	1.53
Non Durables Wholesale	291	1.31
Electronic Markets and Brokers	7	0.03
Motor Vehicle and Parts Dealers	459	2.07

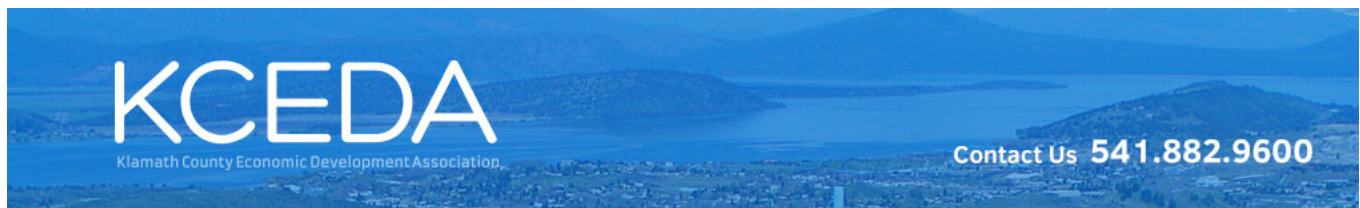
	TOTAL	%
Furniture and Home Furnishings	58	0.26
Electronics and Appliances	119	0.54
Building Materials, Hardware and Garden	799	3.6
Food and Beverage Stores	384	1.73
Health and Personal Care Stores	134	0.6
Gasoline Stations	156	0.7
Clothing and Clothing Accessories	78	0.35
Sporting Goods/Hobby/Book/Music Stores	224	1.01
General Merchandise Stores	912	4.11
Miscellaneous Store Retailers	135	0.61
Nonstore Retailers	44	0.2
Warehousing/Storage, Postal/Courier Service	95	0.43
Publishing	218	0.98
Software Publishers	0	n/a
Motion Pictures and Video	3	0.01
Movie Theaters	13	0.06
Broadcasting	195	0.88
Data Processing/Hosting	17	0.08
Other Information Services	14	0.06
Banking	360	1.62
Insurance Carriers	637	2.87
Real Estate	305	1.37
Rental and Leasing	108	0.49
Legal Services	152	0.68
Accounting	123	0.55
Agricultural and Engineering	108	0.49
Specialized Design	34	0.15
Computer Systems Design	166	0.75
Management/Scientific/Technical Consulting	176	0.79
Scientific Research and Development	18	0.08
Advertising and Public Relations	155	0.7
Other Professional/Scientific/Technical Services	132	0.59
Company and Enterprise Management	37	0.17
Administrative and Support	230	1.04



	TOTAL	%
Waste Management and Remediation	62	0.28
Elementary and Secondary Schools	1,280	5.77
Colleges and Universities	175	0.79
Business Schools, Computer and Management Training	0	n/a
Technical and Trade Schools	13	0.06
Educational Services	77	0.35
Physician Offices	627	2.82
Dental Offices	231	1.04
Other Health Practicioners	259	1.17
Outpatient Care	352	1.59
Medical and Diagnostic Laboratories	6	0.03
Home Health Care Services	142	0.64
Ambulatory Services	203	0.91
General Medical and Surgical Hospitals	1,084	4.88
Psychiatric and Substance Abuse Hospitals	88	0.4
Other Hospitals	35	0.16
Nursing and Residential Care	410	1.85
Individual and Family Services	391	1.76
Community Relief Services	5	0.02
Vocational Rehabilitation	18	0.08
Child Care Services	313	1.41
Performing Arts	20	0.09
Spectator Sports	4	0.02
Performing Arts/Sports Promoters	18	0.08
Agents and Managers	0	n/a
Independent Artists/Writers/Performers	0	n/a
Museums, Zoos, Historical Sites	37	0.17
Amusement, Gambling, and Recreation	222	1
Fitness Centers	160	0.72
Accomodations	843	3.8
Food Services and Drinking Places	1,607	7.24
Repair and Maintenance Services	328	1.48
Personal Care Services	467	2.1
Death Care Services	28	0.13

	TOTAL	%
Religious/Civic/Professional Organizations	506	2.28

Data Source: Applied Geographic Solutions 2020



# Talent Report

60 mile radius around Lat: 42.225 Lng: -121.734

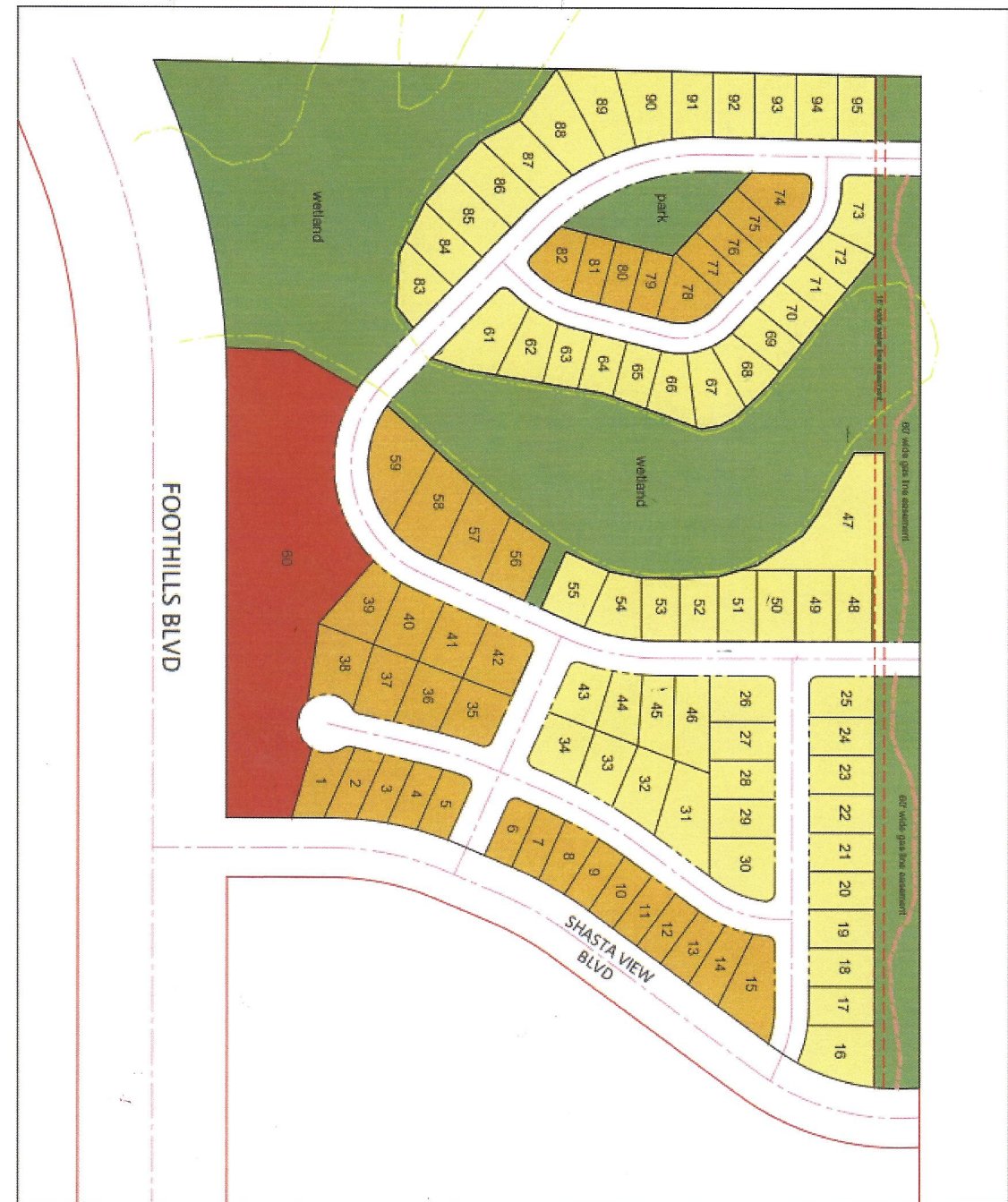
	GRADUATES
Health Professions and Related Programs	371
Business, Management, Marketing, and Related Support Services	260
Education	190
Engineering	166
Visual and Performing Arts	145
Psychology	127
Liberal Arts and Sciences, General Studies and Humanities	123
Engineering Technologies and Engineering-Related Fields	111
Homeland Security, Law Enforcement, Firefighting and Related Protective Services	82
Social Sciences	73
Natural Resources and Conservation	67
Parks, Recreation, Leisure, and Fitness Studies	58
Communication, Journalism, and Related Programs	51
Computer and Information Sciences and Support Services	46
Biological and Biomedical Sciences	45
Multi/Interdisciplinary Studies	41
Foreign Languages, Literatures, and Linguistics	37
English Language and Literature/Letters	32
Mechanic and Repair Technologies/Technicians	20

	GRADUATES
Physical Sciences	17
Mathematics and Statistics	16
History	13
Agriculture, Agriculture Operations, and Related Sciences	9
Transportation and Materials Moving	4
Theology and Religious Vocations	2
Science Technologies/Technicians	1
Grand total	2,107



# Master Plan

## Concept #1





# Master Plan

Concept #2





# Master Plan

## Concept #3

